

MONTY REED TEACHER EXTRAORDINAIRE

This June's exhibition featured the popular teacher Monty Reed who taught for 20 years at what was initially Emsworth County Primary School before he moved to Bosmere School in Havant. The exhibition was put on by Bernie Gudge who was taught by Monty at the School in Washington Road.



Bernie Gudge, Stan Pike, Tony Stimson and Julia Stimson

It featured photos many taken by Monty Reed as well as memorabilia from his pupils and log books from the school. Monty had also kept many albums of his works over the years recording the activities of the children he taught.



The exhibition was opened by Stan Pike MBE.

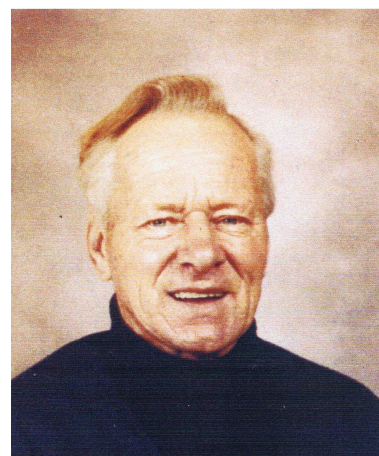
Stan was a long serving member of the teaching staff at Bosmere School including many years as Deputy Head Teacher and acting Head Teacher. He was delighted to have been invited to open the exhibition and congratulated Bernie Gudge on a 'phenomenal' exhibition and what he had achieved with his photos.

Stan had very fond memories of Monty Reed whom he described as charismatic and passionate about getting the best out of every child. He wanted to get as many children through the 11+ but was not just focused on the academic side but on the whole child.

Among the many after school activities he was involved with were scouting, football and sailing and Bernie recalls his boat "Flame" on which many a pupil at Washington Road got a chance to sail.

He organised many school trips including a visit to the Festival of Britain in 1951 and encouraged the boys to get on their bikes to cycle to Kingley Vale for exercise and natural history study. He was a strict disciplinarian but injected fun into class life. He was held in great

affection by his pupils and among the exhibits were letters written to him by pupils when he was on war service from 1940 to 1946.



Monty Reed

A mini school reunion materialised at the museum when many of his pupils from Emsworth came along to visit the exhibition.

Those of you who missed this fascinating exhibition by Bernie Gudge will be able to see a sample of this at the Museum's stand at the Emsworth show on 31st August.

Our colour pages are sponsored by Steven Borland of Borland & Borland the local estate agents.
www.borlandandborland.co.uk

Dates for your diary

All monthly exhibitions are held in the museum's David Rudkin Room.

Talks are held in the Mountford Rooms, Emsworth Community Centre, North Street, Emsworth at 7.30pm. Members £2.00 non members £3.00.

July 4th – August 2nd	Exhibition - "Chichester and District Archaeology Society (CDAS) and the Warblington Roman Villa Estate" by Dr Trevor and Mrs Ann Davies.
August 7th – 31st	Exhibition – "Celebrating 175 years of St. James Church"
August 10th	Local history guided walk led by Dr Margaret Rogers.
August 31st	Emsworth Show
September 14th – 17th	E.M. & H.T. holiday to Cheshire.
September 5th – 27th	Exhibition - "The Oyster Project – the Full Story".
September 21st	Illustrated talk by Dr Trevor Davies
	"Warblington: A Late Iron Age and Roman Estate - Investigations by Chichester & District Archaeology Society".
October 3rd – November 1st	Exhibition "50th Anniversary of Emsworth Marina" by Lorna Tiffany.
October 19th	Illustrated Talk "Meet a Naval Captain of 1805 and his Lady" by Roger Glancefield
November 19th	Title and speaker to be confirmed
December	Stewards Christmas Tea party

Museum Opening Times

Emsworth Museum will be open from 4th April until 1st November on Saturdays and Bank Holidays from 10.30am until 4.30pm, on Sundays from 2.30pm until 4.30pm. and on all Fridays in August from 2.30pm until 4.30pm.

Members are welcome to visit the museum for research on Tuesday and Thursday afternoons from 2.00pm until 4.00pm. except 1st September and 3rd November when the Archive Room will be used for Committee Meetings.

If you plan to visit and would like to be sure that the museum will be open, please telephone or email me.

ADMISSION TO THE MUSEUM IS FREE We are always grateful for financial donations to help with the expenses of running the museum.

Dorothy 01243 373780 dorothybone@btinternet.com

The Treasure Hunt 1 July 2015

On what may turn out to be the hottest day of summer, in the evening we welcomed 24 guides, 24 scouts and many others in groups of three or pairs to this year's Museum Treasure Hunt, devised by Gordon Braddock, last year's winner. It was scheduled to start at 7pm but several people were very keen to have an early start.



On their return to the Museum to a much-needed sit-down and cup of tea, cool drink and biscuits most of the participants agreed that it was a particularly well planned and interesting route and a splendid way in which to spend an enjoyable and informative evening.



What became increasingly clear was that many now put the Treasure Hunt as an established annual fixture in their diaries and look forward to it as a way of exploring the lesser-known areas of Emsworth.



This year's senior winners were a team of three ladies - Renee 1.

The junior winners were Guides 1.

A full list of the teams' scores can be found on the Museum's noticeboard.

Margaret Rogers

Valuing the Vintage

Tracy Teasdale, Emsworth Museum's mentor, contacted us about one of the free talks she had organised at Portsmouth Museum. On the afternoon of Saturday 16th May I went along to "Caring for textiles past and present".

Sarah Howard, a freelance textile conservator and specialist in care of historic dress, described how museums care for textiles in their collections. Helpful tips included how to combat insect attack, care of

environment—temperature and humidity and the uv light problem. Advice was given on storage in acid free boxes and tissue paper, with emphasis on careful folding to avoid pressure points. Members of the audience brought in their treasured shawls and dresses for the best advice.

For me, this talk highlighted conservation rather than restoration, and the need to do our best as volunteers to make every effort to take appropriate care of our own museum's textile collection.

You may notice in the museum we have moved Black Rod in his splendid outfit into the "dress cabinet" thus minimising UV light effects.

Wendy Bright



TALKS REPORT

Emsworth Oysters

Monday 18th May 2015

We are indebted to Ali Beckett, project manager of the Oyster Project, for this talk in memory of Linda Newell.



Linda with fragments of wood obtained from Echo, one of the boats in J D Fosters oyster fleet

Ali described how Linda was keen to tell the full story.

All will know that the Dean of Winchester died in 1902 having eaten an oyster infected with typhoid, however that was not the end of the story. Ali described to us a full history and then quoted from Linda's book "Thus, it was not just one oyster that killed the Dean of Winchester that caused the industry to collapse; it was the unwillingness of the local authority to take responsibility for its actions. From being one of the leading areas for oyster cultivation in the country, Emsworth's oyster industry withered and never fully recovered"

The movie team at Emsworth Community Centre showed DVD

films, made by Millstream Productions, on the big screen to a appreciative audience. The two DVD's are currently on sale in the Museum priced at £5 each. Ali praised Linda for her energy and enthusiasm in bringing this story to the community. The Book of Condolence remains open in the Museum until the end of the season.

Wendy Bright



Ali Beckett speaking to members of the audience

Forthcoming Talks

Monday 21st September 2015: "Warblington: A Late Iron Age and Roman Estate" by Trevor Davies

Monday 19th October 2015: "Meet a Naval Captain of 1805 and his Lady" by Roger Glancefield

50/50 CLUB

The 50/50 Club has been pleased to supply the donor with a copy of the Land Sale documents relating to Maisemore Gardens between 1910 and 1962. A second copy was also made for easy access by researchers. In addition we have purchased new blinds, a chair and a printer/scanner for the Museum office. The printer scanner replaces our original printer which has done excellent service over

the years but is now obsolete as the ink cartridges are no longer available. The new blinds are particularly useful in preventing glare on the office computer screen. We are now considering the purchase of a new vacuum cleaner.

Have you considered becoming a member of the 50/50 Club or increasing the number of shares that you already hold?

Shares still only cost £6 each for a year's membership but, in view of the increased cost of administration since the Club started in 1989, we ask new members to purchase at least two shares. Existing members may, of course, increase their allocation by single shares.

An entry form can be obtained from the 50/50 Club Organiser, Peter Morse (01243 697582, peter.morse@talktalk.net).

Emsworth Show

We will again be at the Emsworth Show on Bank Holiday Monday the 31st August. Last year's show was a bit of a wash out but hopefully we will have better weather this year. Please come along and see us at the Museum stand.

We need to recruit new members and are looking for volunteers to help man the stall and be proactive in getting visitors to join the museum. If you are willing to help us out on our stall for a couple of hours please contact Marguerita Taplin on 01243 374105 email ms.taplin@yahoo.co.uk

Dr Margaret Rule CBE, FSA, D.Litt

President of Emsworth Maritime and Historical Trust from 1994 until 2015



Dr Rule accepted the position of President of E.M. & H.T. following the death of Lord Bessborough on 5th December 1993. In the 40 years that it has been in existence the Trust has only had two Presidents. Margaret's appointment was announced to members at the A.G.M. in 1994.

Margaret Helen Martin was born in High Wycombe, Buckinghamshire in September 1928. As a child she enjoyed reading and was fascinated by archaeology. At school she was encouraged to study science and read chemistry at London University. It was whilst she was working at the International Chemistry Company in London (soon to become Wyeths) that she met Arthur Rule. They married in June 1949 and when Wyeths built a factory at Havant Arthur was asked if he would move there. After renting a flat in Chichester for a year they purchased the almost derelict Watermill at Westbourne which they spent many years renovating. When son Nicholas was born Margaret gave up her job and concentrated full time on archaeology - forming a group of local enthusiasts "to look around the area and see what we could find".

Over the next 20 years this led to various digs in the Portsmouth and Chichester area including the Roman pottery kiln at Rowlands Castle and in East Street in Chichester.

In April 1960 Arthur and Margaret were invited by an engineer to visit a site in Fishbourne where the Water Board was digging a major pipeline trench. When they arrived they could see some tiles and bits of Roman pottery and so the following year obtained permission from the farmer to do a trial dig. To their amazement they found an almost complete mosaic pavement which they lifted and stored in their barn until the farmer was able to sell the land to the Sussex Archaeological Society. Margaret continued to excavate on the site at Fishbourne and this eventually led to the discovery of the Roman Palace. She became its first curator in 1968.

During this time Alexander McKee was investigating the site of the sinking of the Tudor warship Mary Rose and invited her to join him in her spare time. At first she stayed in the relative comfort of the escort boat but in 1971 she made her first dive. When, in 1979, it was decided that the Mary Rose should be excavated fully the Mary Rose Trust was formed with full time staff and Margaret Rule became its archaeological director. In a foreword to Margaret Rule's 1982 book about the Mary Rose Prince Charles said that he was a great admirer of the way she carried out the excavation and eventual raising of the Mary Rose which showed a remarkable record of professional dedication on a grand scale.

On her first visit to Emsworth Museum on becoming President she

told Strahan Soames that she was very impressed by what she saw and wrote just one word

"congratulations" in the visitors book. She referred to the connection between the Museum and the Mary Rose and said that most of the early meetings of the Mary Rose Trust 1967 committee took place in what is now the Main Room of Emsworth Museum when it was a public hall. Dr Rule's first engagement as President was to give a very well attended talk in St. James' Church Hall entitled "Diving into the Past". She was always very enthusiastic and complimentary about the Trust and Museum and visited from time to time. She attended many events - opening the Museum at the start of the season on a number of occasions, unveiling the millennium milestone on the main road by the Emsworth Surgery, drawing winning raffle tickets etc. - often arriving in style in her little red sports car. However during the last few years, because of her failing health, her visits became less frequent - but we were pleased that she was able to join us in July 2013 to celebrate the 25th anniversary of the opening of Emsworth Museum. Although ailing somewhat physically, Margaret's mind was as sharp as ever. She gave a lovely address to the members and visitors present which included her very apt phrase "this gem of a museum" illustrating her high regard for and attachment to the Emsworth Museum.

Margaret died on 9th April 2015 aged 86. She will be much missed by us all.

(Produced using information from The Times obituary, Nick Rule's biography to his father Arthur, E.M. & H.T. newsletters and Emsworth Echo bulletins by Strahan Soames and my own memories).

Dorothy Bone

Chairman's Message

My thanks to Bernie Gudge for his excellent Exhibition on Monty Reed in the David Rudkin Room during June. This Exhibition has been much enjoyed by our visitors and by Bernie himself who has been in the Museum every day the Exhibition has been open. He has made contact with many friends and acquaintances from years ago, exchanging stories and information, and as a result, has added to our historical records in the Museum.

My thanks also to Chris Abel for the wonderful examples of his artworks in glass as his contribution to the very successful Art Exhibition in May during what was a personally difficult time for him. We extend him our deepest sympathy at the sad and untimely loss of his much loved and very talented wife, Deirdre, a few weeks ago.

Our thanks are also due to Bob Duncan for his sterling work in putting the new shelves in the office and for now setting to work on re-vamping the sales area for the Museum souvenirs. Thanks are also extended to Bob for the enjoyable and successful Coffee Morning at his home on the 18 June which raised a significant contribution to the funds of the Trust. A big thank you also to the kitchen crew who kept us well supplied with teas, coffees, cakes and biscuits.

We are delighted that Dorothy Bone is back on her feet following her accident in March and that she was able to join us at the Coffee Morning which was her first social outing for three months.

Replacement for the late Linda Newell is progressing slowly with

one interview completed to date. The Sub-committee is considering revisions to the scope of the post to possibly divide it into two to make best use of the available talents of the candidates.

Last but not least, as you know Peter Morse is standing down from the office of Membership Secretary. We are very grateful to Peter for all he has done over many years in this important role. We are actively seeking a replacement and I hope that we may have now found a volunteer to take on this task. More information on progress of this will be provided in the News sheet to be distributed in November with the Emsworth Echo.

Tony Stimson
Chairman



Recent Aquisition THANKS To Havant Borough Council

The search for a Plan Chest for the museum is over. Clive Pugh and Wendy Bright have been searching for a unit to house our maps and plans (presently rolled up) for many months. They were the instigators of a bid for a HBC Havant and Emsworth Approved By You scheme and were awarded a grant to acquire a suitable unit. A Plan Chest has been found locally and was moved to the museum on Monday 29th June. As the size of the chest is 4' x 3' x 3' this has taken some weeks and considerable expense! However, the chest is in place and ready for use.

Geoff Higgins

Know Your Smugglers and Oysters. Special Solar Boat Trips from Emsworth

There will be trips from the Emsworth Jetty on Chichester Harbour Conservancy's Solar Heritage Boat with the chance to hear more about local smugglers in July and August. There are also trips on oyster fishing in September and October and as these form part of Emsworth's Oyster Project these trips will be free of charge. As you

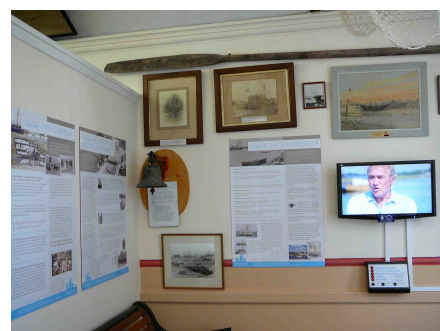
will know Emsworth Museum in conjunction with CHC obtained a grant for the project from the Heritage Lottery Fund

Both trips will include a commentary and activities for the younger passengers, so would make an ideal holiday activity. Full details of dates and times and bookings are available by contacting CHC on 01243 513275, visiting their website at: www.conservancy.co.uk, or looking at their brochure.

To round off your trip, come and

visit the Museum's new Linda Newell Oyster Gallery and/or take a look at the film specially produced for the oyster project.

Sylvia Courtnage



The Linda Newell Oyster Gallery

FORTHCOMING EXHIBITIONS

The exhibition about the oyster boat Terror, originally planned for September, has been deferred until 2016 to mark the 10th anniversary since it was launched.

“Celebrating 175 years of St. James’ Church”

7th – 31st August

The exhibition will show how this attractive building, completed in 1840, and described as Byzantine Romanesque has changed over the years but continues to be a very real presence in the community. Built at a cost of £1,900.00 it has been extended several times - with the addition of a vestry in 1894 completing the work. It is a popular venue for a variety of activities – local and international choirs have visited: radio broadcasts and medical lectures have been held here as well as the many church activities and events.

“Emsworth’s Oyster Project – the Full Story”

5th – 27th September

Coinciding with the completion of the Heritage Lottery Funded community project which aimed to raise awareness of the importance of the oyster industry in Emsworth this exhibition will show the history of the

local trade and how it contributed to the development of the town.

A series of panels will explore how the project progressed and the various outcomes - which included a documentary film, work with a local school and promotion of local produce – helping to bring the story through a variety of media to a wide audience of all ages. To compliment the exhibition you will be able to watch the two films – Emsworth’s Oysters and Death of the Dredge – in the new Linda Newell Oyster Gallery.

“50th Anniversary of Emsworth Marina” – from logging pond to Marina 3rd – 25th October

This exhibition will show how Foster’s logging pond in the northern end of Chichester Harbour was turned into a marina by Rear Admiral Percy Gick and how it has evolved over the last 50 years. Photographs will illustrate all it has to offer and the unique haven of peace and tranquility it has become since the Wakelin family took over in 1993.

These three final exhibitions for 2015 in the David Rudkin Room show very different aspects of Emsworth’s colourful history – we look forward to meeting you when you visit to see them.

Dorothy Bone

Coffee Morning

Again Bob chose exactly the right day for his special fund raising coffee morning at Swan Close.



It was a beautiful clear day - the sun shone brightly, there were dinghy sailors and swans to watch and friends to chat with.

Donations received amounted to £232.82 and also £42.50 of museum goods were sold. Thank you, Bob, for inviting us to share your house and garden and enjoy the lovely view on a tranquil June morning.

Dorothy Bone



WARBLINGTON ESTATE VILLA



The Chichester & District Archaeology Society under the direction of Dr Trevor and Ann Davies and members opened an interesting exhibition in the Rudkin Room of archaeological information and artefacts which have been found locally.



The Society has been working since approximately 2006 on what has now come to be called the Warblington Villa Estate, close to the Havant Road in Emsworth.



Ann Davies and Margaret Rogers

Dr Davies and his wife have arranged a time line on the boards showing the Society's various events and finds from pre-Roman times to the present day. In 2010 three trenches were dug across the wall discerning substantial foundations followed by excavations on the barn across from the villa and then the "rectangular building".



Amphora

In the exhibition room's centre cases are to be found items from some of their recent digs of Roman tile and brickwork as well as part of an imported amphora. Small artefacts - coins, pins etc., also of the Roman era are displayed in the side cases.. The exhibition is on at the museum until the 2nd August.

Margaret Rogers



Roman roof tile

Friends of Emsworth Community Health Fete

On Saturday 13th June on a windy day, we set up a stall at the Victoria Hospital Garden fete in the morning.

An annual fundraising event for local charities, it always attracts queue and this year it was opened by Havant MP Alan Mak.

We sold a number of books and chatted with visitors- some decided

to go across to visit the museum that morning. Alan Mak MP chatted with us and agreed to help in promoting Emsworth Museum.



Maureen Barrett, Alan Mak and Wendy Bright

Our presence at local events helps to raise Emsworth Museum's

profile and enables the promotion of membership of the Trust. With membership levels falling, we are desperately in need of more volunteers especially for stewarding but also welcome offers for other smaller but necessary tasks. If you a bit of spare time we would be really pleased to have offers of help-just drop a note into the Museum with your details and we will contact you, email or telephone the Museum.

Wendy Bright



The views expressed by contributors to this newsletter do not necessarily reflect those of the General Committee.

All rights are reserved. Contact the editor for permission to use material.

If you would like to provide a news article or illustrations for the newsletter, please send this to the editor, Marguerita Taplin margueritaplin@yahoo.co.uk (disk or email preferred to hard copy)

Printed by PDC Copyprint of Havant (Tel: 02392 471333)