



Operation Overlord: Great Plans and Big Egos

Churchill to Mountbatten, October 1941

"You are to prepare for the invasion of Europe, for unless we can go and land and fight Hitler and beat his forces on land, we shall never win this war. You must devise and design the appliances, the landing craft and the techniques to enable us to effect a landing against opposition and maintain ourselves there.... You must take bases to use as establishments where you can train the Navy, Army and Air Force to work together as a single entity."

The evocative start to General The Lord Richards of Herstmonceux's illustrated talk in the Emsworth Community Centre on 15th January was the stirring music played from the film *The Longest Day*. Facing an expectant audience, David Richards was welcomed to the first of the Trust's 2020 talks by Chairman, Trevor Davies. From 2010 until he retired in 2014, Lord Richards was Chief of the Defence Staff; the most senior military commander in the UK armed forces. As Trevor said "....with his extensive military and, dare I say, political experience he is uniquely placed to explain the military and political thinking behind the D-Day invasion decision and how the thinking evolved. We have a soldier explaining a military campaign that was the biggest and most complex military operation in the 20th century".

Sun Tzu, a Chinese General living about 500BC, was a military strategist whose ideas are still studied today. Lord Richards reiterated one of Sun Tzu's most famous quotes, "Strategy without tactics is the slowest route to victory. Tactics without strategy is the noise before defeat". Both Strategy and Tactics (or Logistics) needed to be balanced if the planning and invasion of Europe were to succeed. Masterminding the planning and execution however were men from many different military forces and it was the relationship between these men that was the key to success or failure.

Planning for D-Day and the biggest amphibious operation in history started in earnest in 1942.

Churchill wanted America to join the war and after Pearl Harbour that is just what happened. The Americans wanted to tackle the Japanese first before going after Hitler, and the decision was made after often fraught discussions – Europe first, Japan second. This was a strategic decision. Next question was where to attack? 1943 can be thought of as the 'Mediterranean' year. It was in this theatre of operations that several assaults took place and vital lessons were learned.

Before that though there was the disaster of the 1942 Dieppe Raid which had shown the importance of detailed assault planning and the necessity for the Army, Navy and Air Force to work together as a single entity. Training became a priority.

Continued on the back page

General The Lord Richards of Herstmonceux (left) and Trevor Davies, EMHT Chairman



Diary Dates

All monthly exhibitions are held in the Museum's David Rudkin Room. Talks are now usually held on **Wednesday** evenings, in the Mountford Rooms, Emsworth Community Centre, North Street, Emsworth PO10 7DD at 7.30pm. Doors open at 7.00pm. Admission: Members £3.00, Non Members £4.00.

February 19th	Talk – “The Loss of <i>HMS Royal George</i> ”. A Creative Response by Denise Bennett.
March 18th	Annual General Meeting (agenda in envelope with this Newsletter)
March	Stewards' Instruction Sessions If you Stewarded in 2019 (or you volunteered late in the year and your first duty will be in 2020) your invitation will be in the envelope with this Newsletter. If you haven't yet volunteered but would like to be a Steward in 2020 please contact me on 01243 373780.
April 4th	Museum Re-opens
April 4th – 23rd	Exhibition – A Glimpse into the History of Westbourne
April 25/26th and May 2nd/3rd	Exhibition – Emsworth Art Trail's exhibitors Michael Bury and Angela Lee
May 8th – 31st	Exhibition – Wildfowling in Chichester Harbour. NB This exhibition starts on Bank Holiday Friday, 8th May, Victory in Europe Day
May 10th (Sunday)	Local History Walk led by Christine Bury
May 13th	Talk – “Wildfowling in Chichester Harbour” by Ian Hutchinson
June 5th – 28th	Exhibition – Title to be confirmed
June 14th (Sunday)	Local History Walk led by Christine Bury
June 18th (Thursday)	Talk – “Commander Crabb: What Really Happened” by Ann Bevan
July 4th – 26th	Exhibition – Title to be confirmed
July 12th (Sunday)	Local History Walk led by Christine Bury
August 1st – 31st	Exhibition – Title to be confirmed
August 9th (Sunday)	Local History Walk led by Christine Bury
September 5th – 27th	Exhibition – Celebrating 850 years of Thomas à Becket: The Man and the Church
September 13th (Sunday)	Local History Walk led by Christine Bury
October 3rd – Nov. 1st	Exhibition – Title to be confirmed
October 21st	Talk – Title to be confirmed
November 18th	Talk – “The Overlord Tapestry” by Tracy Teasdale
December	Stewards' Christmas Tea Party

Emsworth Museum will be open from 4th April until 1st November on Saturdays and Bank Holidays 10.30am – 4.30pm and on Sundays 2.30pm – 4.30pm. On all four days of the Art Trail the Museum will be open 10.30am – 4.30pm. In addition it will be open on 23rd April 10.00am – 2.00pm and some Fridays in August 2.30pm – 4.30pm.

Members are welcome to visit the Museum for research on Tuesday and Thursday afternoons between 2.00pm – 4.00pm **BY APPOINTMENT ONLY BUT NOT WHEN COMMITTEE MEETINGS ARE HELD ON** 18th February, 17th March, 21st April, 19th May, 16th June, 21st July, 18th August, 15th September, 20th October, 17th November and 15th December.

ADMISSION TO THE MUSEUM IS FREE We are always grateful for financial donations to help with the expenses of running the Museum.

Dorothy Bone 01243 373780, email: dorothybone@btinternet.com

From The Chairman



The Museum may be closed for visitors, but it has been a busy time.

First, I must apologise to those members who were unable to get into the David Richards' extremely popular lecture on

15th January. The response was so positive that it caused some logistical difficulties with the approved capacity of the room. The Committee will think if we can improve the process of ticket selling so that it works in a fairer and more transparent manner.

As described elsewhere in this Newsletter (page 4), the Museum's most significant purchase for many years stands proudly against the west wall of the Main Room. Thanks are due to Phil Magrath for overseeing the cabinet's arrival and commissioning. The next task is to create an eye-catching display that will draw visitors into the far-left corner of the Museum.

Our plan is to use the new cabinet's sealing capability to display some of the textiles and other objects relating to the world wars. Phil Magrath and Steve Miller are searching Omeka to identify relevant objects in the collection that have not necessarily been on display in recent times.

Elsewhere, we have reviewed the contents and the labelling of the model boat cabinet. Non Emsworth-specific boats have been removed; the model of the *Terror* has been added, and the labels have been re-presented in larger type on creamy-yellow card (which is in accordance with museum best practice). Maureen Barrett and Wendy Bright have done an excellent job of cleaning the inside of this cabinet which had not been disturbed for several years. There are plans to bring the lighting installed in this cabinet into use.

There have been minor changes to the Warblington cabinet. One example is the inclusion of two coins found during the 2019 excavation. The first – a Roman coin issued by the usurper Emperor Allectus shows a fine image of a Roman warship – an appropriate reflection of Emsworth's maritime heritage. The second coin is an Edward I silver penny, which reinforces the circumstantial evidence that the Roman villa site was quarried to provide building material for Warblington Church.

We are launching an appeal for the conservation of the Edwardian wedding dress. This dress was worn by an Emsworth lady at her wedding in

the early part of the 20th century. It has been displayed in the Museum for at least 20 years and is beginning to suffer. As part of the collection, it fulfils the requirement of being an object with a distinct Emsworth provenance. Your Committee are of the view that it should be conserved by the textile conservation specialist recommended by our Museum Mentor Tracy Teasdale.

Thanks are due to Margaret Rogers and Geoff Higgins for their diligent work in cataloguing the Morgan archive. Hopefully, this archive will soon be indexed on Omeka. We are building a team of Omeka inputters – Hillary Campbell, Catherine Jones and Keith Richardson – to do this.

Tony Stimson assisted by James Mant has masterminded the re-decoration of the David Rudkin Room, which now looks quietly smart – an appropriate background to our temporary exhibitions.

We are planning to remove one or two items from display to create a better circulation and a slightly less cluttered feel in the permanent display area. We are cautious about taking these steps, because your Committee do not wish to change the overall atmosphere of the Museum, so feedback would be welcome.

In the June 2019 Newsletter I announced that the Committee had set up a sub committee to consider the options for the Museum's development over the next five years or so. The sub committee has now finished its work and the conclusions are being debated by your Committee.

Trevor Davies, Chairman

It's Here

From Bucharest to Emsworth our new cabinet arrives – in bits



See overleaf for more details

Curator's Corner

The build!

An excited Curator, arriving at 08.00 at the Museum on the morning of Monday, 16th December 2019, was in truth also slightly nervous. Excited about the arrival of a **new** display cabinet which had evidently not happened previously and nervous because there is always that unforeseen eventuality to worry about on occasions like this. The first part of the plan went well though. A huge lorry arrived in the car park outside the Museum at exactly 08.30 having commenced its journey in Bucharest. My first thought pondered the mood of any arriving car park attendant since the lorry's length occupied four car parking bays! A little while afterwards three gentlemen arrived who, as it turned out, were Romanians also from Bucharest with one of them, fortunately, speaking good English.



In via the fire escape

The next task involved choosing the best point of access into the Museum, which after a short tour proved to be via the fire escape. Action then focussed on unloading the lorry with the component parts – work made slightly more difficult because of having to negotiate other items in the lorry not destined for us but for other parts of the country. After an hour and a half, luckily without interruption by any inquisitive car park attendants, work could then commence in earnest and eventually occupied a day and a half.

Not surprisingly – considering the likely cost involved – the project from its first idea has taken well over a year to come to fruition. There were lengthy discussions at committee meetings as well as the time-consuming task of gathering information for the tendering exercise. In the final analysis it came down to two companies, ClickNetherfield based in Scotland and Florea D. Sign based in Germany. Despite the potential for Brexit delivery difficulties and with roughly equal quotations the Committee voted in favour of the latter – a gamble? Perhaps!



Building the cabinet

Early indications are that the gamble has proved to be successful and I would like to thank all those who had faith in me and in those who supported the project. Our thanks are also due to all those who, over the years, have made donations and tirelessly raised funds for the Museum. These efforts enabled the Trust to be able to afford such a commodity.

The constructors worked diligently and skilfully leaving the Museum with a cabinet that will last many years. It carries the mark of German engineering excellence as a robust, airtight, secure and well-lit cabinet with two drawers of storage space at the base. The next challenge is to populate it with artefacts for the start of the 2020 season!

Philip A. Magrath

Photos: Philip Magrath and Trevor Davies



Our thanks to (from l to r) George Dinu, Ionut Tigau and Florin Vasiiu, the team who built the cabinet

'Thank You' Christmas Party



Bernie Gudge

Some 50 stewards and volunteers met in the Parish Hall on Tuesday afternoon, 10th December for the annual 'thank you' Christmas party thrown by the EM&HT Committee. Judging by the level of talk and happy faces it was a very sociable occasion when friends could meet up, eat the festive fare and enjoy some lively banter and furious mental activity as yet more fiendish quizzes were tackled.

The afternoon was compered by Vice Chairman, Margaret Rogers, who was delighted also to present photo archivist, Bernie Gudge, with Life Membership of the Trust in recognition of the valuable work he has done for the Museum. Bernie has not only masterminded photographic exhibitions, but has frequently come in to talk to people seeking help with researching their ancestors besides looking after the photographic archive.

The draw was made for the December winners of the 50/50 Club organised by Peter Morse. The winners of the £35 first prize and the £15 second prize were Margaret Rogers and Thelma Bray.



Photos: David Young

50/50 Club Winners in 2019

Month	No	Name	Prize	Value
January	154	Dr P M Last	First	£35.00
January	7	Mrs T R Bray	Second	£15.00
February	80	Mrs M S Taplin	First	£35.00
February	152	Dr P M Last	Second	£15.00
March	51	Mrs Vickers	First	£35.00
March	18	Mr A W Stewart-Fitzroy	Second	£15.00
April	199	Mrs M Riding	First	£35.00
April	159	Mr J H Forster	Second	£15.00
May	17	Mr W Dawes	First	£35.00
May	175	Prof. A C Pugh	Second	£15.00
June	226	Mr R Campbell	First	£35.00
June	105	Mr & Mrs D Payne	Second	£15.00
July	7	Mrs T R Bray	First	£35.00
July	124	Mr & Mrs M A Edwards	Second	£15.00
August	176	Prof. A C Pugh	First	£35.00
August	106	Mr P Chisnall	Second	£15.00
September	221	Mrs P A Williamson	First	£35.00
September	16	Major & Mrs E Allen	Second	£15.00
October	228	Mr R Campbell	First	£35.00
October	33	Mr P Barge	Second	£15.00
November	13	Mr W A M Stimson	First	£35.00
November	195	Mr D A W Wells	Second	£15.00
December	28	Dr M Rogers	First	£35.00
December	37	Mrs T R Bray	Second	£15.00

Oral History

The Museum would like anyone interested in talking to and recording people's memories of days gone by to get in touch. It involves contact with people, either in the Museum or in their own homes, and putting them at ease to chat to camera. This valuable resource will then be added to the Museum's library. You would not be alone as there is always someone to accompany you.

If you are interested or have any questions please do contact Dorothy Bone, tel. 01243 373780 and she will be pleased to give you further details.



Emsworth Sailing Club 100th Anniversary Exhibition

Emsworth Sailing Club Commodore, Michael Geary (*inset*), opened the club's centenary exhibition in the David Rudkin Room on Saturday, 3rd August. Curated by Adrian Fox, John Williams, Don Manson, Kate White, Dennis Welch and Jane Mellor, the exhibition ran until 1st September. Among the welcomed visitors was our Trust President, The Rt. Hon. Lord Willetts of Havant who toured the exhibits on 24th August.



celebration of MUD!

As Mike Geary said in his opening remarks, "the club is blessed with an excellent location and facilities. We are very pleased this year to welcome many families with children as new members precisely because we offer good training facilities and a fun sailing environment". Apart from sailing, the club also promotes stand up paddle boarding, rowing, kayaking and model boat racing.

When inviting Mike Geary to open the exhibition, Trust Chairman, Trevor Davies, recalled that when the town's oyster industry died in the early years of the 20th century, Emsworth seafarers reinvented themselves and put their skills to new uses in particular on the J Class racing fleet in the 1920s and 30s.

The 100 year story was told through moving pictures, still photographs, stories, biographies and artefacts. If you missed the exhibition then a book entitled *Emsworth Sailing Club: A Centenary History* is available from (email) secretary@emsworthsc.org.uk, price £20.

The Emsworth Sailing Club opened in Bath Road in 1919 and Mike Geary spoke of the club's history and of the various commemorative centennial events taking place including the visit in May by HRH Anne, The Princess Royal. For further details, please see the article by Ian McIntyre in *The Emsworth Echo* 2019.

This exhibition was two years in preparation and was first displayed in the club's own premises before transferring to the Museum. Visitors could see every aspect of the club's activities from an historical timeline to trophies won, instruments used, sailing fashion changes over the years, events, even the



David Willetts, left, with James Meeke, EMHT Property Trustee, centre, and John Williams looking at the centenary book

P G Wodehouse and Lillian Barnett

Tucked away in the left hand corner in the Main Room of our Museum and almost hidden from the passing browser by two screens is one of the best library collections in England of P G Wodehouse material. Whilst you may not have time to delve into all his books, spare around ten minutes to learn more about his life-long friendship with Lillian Barnett. Lillian was his housekeeper at his house 'Threepwood' in Record Road for ten years and when he went to America was his anchor and home correspondent in England until she died in 1974.

Lillian's son Hugh very kindly donated much of this correspondence to the Trust and it may now be seen on a screen standing on a pedestal in the corner next to the desk. So easy to use by just opening up the touch screen, you may learn much of P G Wodehouse's kindness and attachment to 'one of the nicest people I know', who, despite his asking her and her family to join him in America, continued to live in Bridgefoot Path for the rest of her life.

Margaret Rogers

Transport in Emsworth up to the 1950s

Last September, photo archivist, Bernie Gudge, drew on Museum records as well as his own memories and prints to mount a nostalgic look at transport in Emsworth from the turn of the twentieth century to the 1950s.

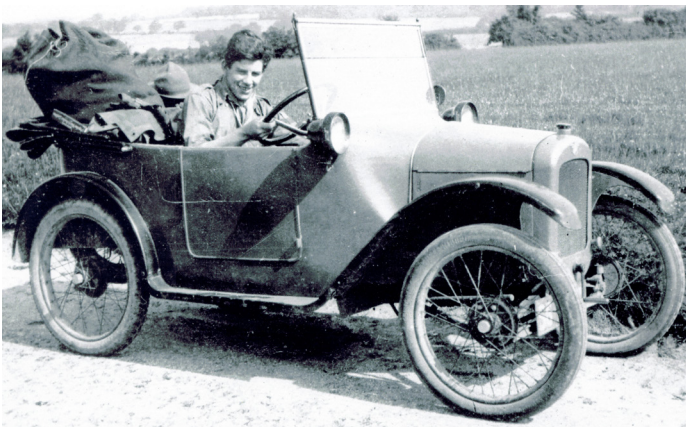
Photographs lined the walls of the David Rudkin Room and spilled over into the cabinets showing Emsworth's life in motion. In the opening years of the century deliveries were made by horse or pony and trap. Bicycles soon became ubiquitous and were used for both commerce and leisure activities. For instance, J D Foster with his racing bike vied for space in the exhibition with Birkie Miller on his sail-assisted tricycle. Fire fighters with their horse-drawn equipment could be seen close by a Kinnell & Hartley Breweries Burrell traction engine. Cars, motor cycles, charabancs and coaches soon made an appearance.

Until the 'short bypass', now known as the A 259, was built in the mid 1970s, Portsmouth to Chichester traffic travelled through the commercial heart of Emsworth coming from West Street, up the High Street and exiting down Queen Street. As the twentieth century progressed, lorries, buses and coaches became larger, car usage increased and traffic problems began to build up.

The many visitors to the exhibition were treated to an attractive display of mainly black and white pictures showing transport used on Emsworth's roads in the not so distant past.



Birkie Miller on his sail-assisted trike



Scout Leader, Mr Lewis, leaving for camp in his Austen Seven



A tricky turn into Queen Street

Do you shop in Waitrose in Havant?

Some months ago the late Sylvia Courtnege and I applied for a grant from the Waitrose Community Matters scheme. I've now heard that Emsworth Museum has been selected as one of the organisations that customers can read about and hopefully vote for during the month of March.

Emsworth Museum's collection of textiles and fabrics includes a number of items that we believe should be displayed on special conservation standard mannequins. These include the Edwardian Wedding Dress, the uniform worn by Sir Richard Thomas when he served as Black Rod and the uniform with medals of a Free French Navy Officer who was based in the Bir Hakeim Barracks in north Emsworth in WWII.

Any funds received from the Waitrose Community Matters scheme will be put towards the display of these important items and the research needed to illustrate their relevance to the Emsworth story.

When you shop In Waitrose in March please remember to put your tokens in the container for Emsworth Museum. If you would like more information please telephone me, **Dorothy Bone**, on **01243 373780** or email **dorothybone@btinternet.com**.



Centenary of Scouting in Emsworth

One hundred years of Scouting in Emsworth was celebrated in the Museum during October. The last 2019 exhibition in the David Rudkin Room highlighted in words and pictures the many achievements, activities and awards that local scouts have won.

The first Emsworth troop was set up on 11th November 1919 by Bruce Way. He was approached by the curate of St James' Church with a view to starting a Scout group and the church was the first meeting place. The following year Miss Irene Way, sister of Bruce, started a Wolf Cub pack in Emsworth.

1st Emsworth Scout group is the oldest continuously running scout group in the Havant district and the exhibition showed how scouting has developed in the town in the years since 1919. Recently, four

Emsworth scouts achieved their Queen's Scout Award. Groups have attended camps and jamborees both in the UK and overseas. Members have taken part in working trips to Uganda in 2000, 2006, 2009 and Tanzania in 2012. The most recent trip was to Uganda earlier in 2019 when some Emsworth Scouts joined with other Hampshire Scouts to provide a village with a protected drinking well for 500 people.

Boys are welcome to join the thriving Emsworth Scout group from six years of age. Waiting lists are closed for the Cub pack but open for Beavers, Scouts and Explorers. Today's scouts are just as likely to go skiing as to take part in raft paddling explorations or listen to campfire stories. The activities and the uniform have changed considerably over the years but the ethos has remained the same.



From left to right: Michael Croucher, Group Scout Leader, cub scout Eddie Croucher, Becca Chambers (Beaver Colony) and Hilary Walker and Richard Jarczyk (Livingstone Cub Scout Pack)

Far left: Just two of the colourful display boards

Summer Walks

Our popular Emsworth walks led by Christine Bury are resuming in May, but this year they will be held on Sunday afternoons not on Wednesday evenings. The dates are 10th May, 14th June, 12th July, 9th August and 13th September. Each of the five walks will start at the Museum at 2.15pm and return there about 3.45pm. These informal strolls around the town looking at buildings and sharing stories about historical personalities and places cost £3 per person payable on the afternoon.

Emsworth Surgery Relocates

NHS England have approved Emsworth Surgery's relocation to our neighbour, The Victoria Cottage Hospital. Work on the refurbishment should start early in the year. Conversion of the unused hospital building to a state-of-the-art surgery is expected to cost around £4 million.

Royal Navy Camps in and around Havant

The 2019/2020 series of the Trust's winter talks in the Community Centre opened on 16th October with an illustrated guide by Bob Hind to the Royal Navy camps in Bedhampton, Havant and Leigh Park.

Bob is a local historian, author and columnist with the *Portsmouth News*. As Trust Chairman, Trevor Davies, pointed out in his introduction to this talk, 'A key message from our very successful exhibition on the 75th anniversary of D-Day at the Museum earlier this year, was the huge number of military camps in this area during World War II'.

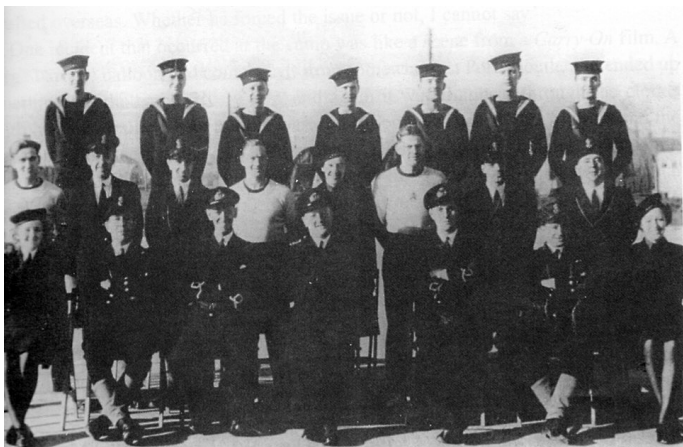
Bob's opening photograph (right) showed just some of the many local naval camps that were built very close together. In a small area near to where Bob grew up were Belmont Camp, Bedhampton/Fraser Camp, HMS Daedalus III and Stockheath Camp. These camps housed thousands of hostilities-only sailors waiting to be drafted to ships. Small groups of Wrens were also based there but had segregated quarters usually fenced off with barbed wire. While waiting for the draft, the men lived in Nissan huts and were subject to naval discipline. Theatres were provided and gardening proved a popular recreation. Rumour has it that Gracie Fields performed at Bedhampton Camp which also had a swimming pool.



Camp Sites: A Stockheath; B HMS Daedalus; C Fraser; D West Leigh; E Belmont

Following the blitz in Portsmouth, bombed out families were housed in Fraser Camp and later after the war, HMS Daedalus III became a short-term home for displaced persons from the Baltic States. These included Lithuanians who built a chalk monument of the Lithuanian flag.

Bob recounted stories told him by people who had lived in the camps and he showed, with the aid of aerial pictures, just where in the various localities the camps were built. Fortunately the camps were never bombed but the huts were reputed to be freezing in winter and hot in summer. Eventually the camps were demolished as the new Leigh Park housing estate became established.



Some Naval officers and ratings

Exhibition Previews

Westbourne Local History Group are showcasing their work in April's opening exhibition in the David Rudkin Room. The attractive and nostalgic display will include old maps that show the route to Westbourne and Emsworth via Cinsworth and Eastbourne as well as photographs and documents illustrating the shops and businesses that have long disappeared and watermills that existed in the past.

The Emsworth Arts Trail this year is being held on the weekends of 25th/26th April and 2nd/3rd May when Michael Bury and Angela Lee will be displaying their artwork in the David Rudkin Room.

Michael will be showing watercolours of classic sailing craft, seascapes and coastal and harbour views. Angela is a mixed media artist creating 3D sculptures using fabric and embellishments and then painting them with coloured pigments.

The Heartland of Wales, 8th to 12th September 2019



On Sunday 8th September, nearly 30 members of the Trust set off on a Woods coach from Emsworth for Wales. The first stop was at Tintern Abbey, which was founded by the Anglo-Norman Lord of Chepstow in 1131 with a community of 13 white Cistercian monks. Monastic life continued to flourish until the reign of Henry VIII when he dissolved all monasteries. Now mainly ruins, Tintern Abbey still has impressive architecture, its restoration ongoing. The journey continued up the Wye Valley across the Brecon Beacon National Park with its rolling hills covered in sheep, trees and bushes silhouetted against the skies – the views were breath-taking. In the evening our party arrived at the Metropole Hotel for a five day stay in the spa town of Llandrindod. The hotel accommodation was comfortable and had a friendly efficient staff with excellent food served in the spacious dining rooms.

On Monday there was a picturesque drive through the Wye Valley to Aberystwyth. A walk along the long seafront then a ride on the cliff railway revealed dramatic seascapes and cliff views. The visit to see the Camera Obscura in operation was disappointing as the images were not clear. Others in the group explored the Coliseum Museum at the Tourist Information Centre. A tour of the Rheidol Steam Railway engineering works, which has a unique apprenticeship scheme, was followed by a scenic journey on the train which travelled through ancient woodland to Devil's Bridge in the heart of the Cumbrian Mountains.

On Tuesday the party visited the Royal Welsh Crystal Factory at Rhayader where several members of the tour bought crystal vases.

After visiting the Elan Valley Visitor Centre, the coach travelled along the beautiful valley and Mark, a young ranger, provided the local knowledge. A walk along the edges of one of the reservoirs revealed the scale of these Victorian creations. The area is steeped in history and the wildlife is abundant.

In the afternoon there was a tour of the Hall at Abbey-Cwm-Hir, a large house set in 12 acres. Built in 1834 in gothic revival style the Hall is now owned by a financier, Paul Humpherson and his wife Victoria who bought the house in 1997 and have restored it to its gothic splendour. Every room is crammed with furniture and artefacts including 14 marble fireplaces, Rococo and stained glass ceilings, themed bedrooms and bathrooms. The gardens are more traditional with a walled garden, lawns, terraces, a lake and woodland walks. The day ended with a visit to the National Cycle Museum at Llandrindod. The carefully displayed cycles brought back memories of their youth to members of the group.

Tintern Abbey



The sumptuous interiors and renowned gardens made the tour of Powis Castle and its gardens on Wednesday very enjoyable. The castle dates back to 1200 and has been lived in since then. Filled with fine furniture and paintings there was also an exhibition of objects associated with Clive of India who married into the family. There was a display of the way of life of young schoolgirls from a boarding school, evacuated to the castle for safety in the Second World War, with poignant letters home and examples of their schoolwork. A walk down the garden through the four formal terraces to the bottom of the slopes revealed colourful bushes and flowers in full bloom. Fortunately there was a bus ride back to the flat grounds above. A railway journey on the Welshpool and Llanfair Light Railway for a 16 mile journey through the Mid Wales countryside ended the day.

Although Thursday was the last day of the holiday there was a stop at Ledbury with its 7th century black and white market house and cobbled Church Lane that led to the St Michael's and All Angels Church.



Inside the Rheidol Steam Railway Engineering Works

Inside the church the altar was adorned with a stunning copy of Leonardo da Vinci's painting *The Last Supper*. This colourful canvas was painted by a local artist, Ballard, in 1824 and restored in 2007. Late afternoon the coach trip ended at Emsworth after an informative and enjoyable five days holiday exploring the Heartland of Wales.

Sue Young

Photos: David Young



Above: Powis Castle



Relaxing at Abbey-Cwm-Hir



Right: Ballard's copy of The Last Supper

Our driver from Woods, Rob Tilbury, was patient, kind and helpful as well as negotiating some perilous bends and narrow roads, not least an amazing passing situation with a chemical tanker on a very narrow road just outside the Elan Valley Visitor Centre. He joined us for meals and was part of the group and our activities which included mileage readings for each day that resulted in five lucky winners.

I facilitated this trip but the enjoyment for me was due to the friendliness of the group itself and the enjoyable time we all had visiting the attractions and eating and socialising together. I am planning a trip to the Yorkshire Dales and hope to see many of you again on 8th September 2020. I would welcome suggestions for evening activities – a board game evening, film, talk.

I am preparing a pack of materials about the Mid Wales Trip which contains guidebooks and other materials for information. It may be borrowed from the Museum in April.

Jan Butler

Museum Talks

We have an interesting series of talks this year including an extra couple of talks in May and June. Unfortunately our Commander Crabb talk last October had to be cancelled due to unavoidable circumstances but this has been rescheduled for Thursday, 18th June. More information on this will follow in the next issue.

The Loss of HMS Royal George – 1782 by Denise Bennett. Wednesday, 19th February, 7.30pm

This talk comes well recommended by members of the Museum who have heard it elsewhere. Denise Bennett tells us the story of the sinking of the Royal George, illustrating this through poetry and images. *HMS Royal George* was formerly the *Queen Anne* but was renamed in honour of the then King when she was relaunched in 1756.

Wildfowling in Chichester Harbour: a talk by Ian Hutchinson on Wednesday, 13th May, 7.30pm

Our talk on 13th May takes place in conjunction with the exhibition that runs from 8th to 31st May in the David Rudkin Room. Ian Hutchinson (Hutch) former Chairman of Emsworth and District Wildfowling and Conservation Association expands on the theme of Steven Borland's exhibition based on Steven's recently published book *Mud Pattens in the Morning: a History of Wildfowling in Chichester Harbour*.

We hope to open the Museum between 6 and 7pm on the 13th May so that those attending the Wildfowling talk will be able to view the exhibition beforehand. We are in need of an additional Steward to man the Museum at that time. Please email me if you are able to help us.

The cost of talk tickets for non members is rising from £4 to £5 from January 2021 so get your friends to become members. It costs £9 for a single and £16 for joint membership so it is well worth it to join with at least four talks per year and at a ticket cost of just £3 to members.

Marguerita Taplin

email: talks@emsworthmuseum.org.uk

Operation Overlord talk continued from page 1

Bolero was the codename for the build up of larger and larger numbers of American service personnel who began to arrive in Britain in the months prior to D-Day. By May 1944, 1.5 million Americans had crossed the Atlantic. The USA wanted to invade France in 1943 but Churchill never contemplated it until 1944. Friction between the Allies caused problems and photos of the Combined Chiefs of Staff conference in Casablanca in January 1943 show that the planners were not in complete harmony. Throughout that year there were detailed, often fractious, debates as to suitable beaches for invasion; these had to be within range of Spitfire aircraft and once on land had to be capable of defence.

As 1943 progressed Napoleon's aphorism 'Morale is better than equipment' began to prove true. Morale among servicemen and commanders began to improve as the Battle of the Atlantic swung in the Allies' favour, the level of air superiority was raised with increased fighter production and the Battle for Kursk was won by our Russian allies.

In his entertaining and authoritative talk, Lord Richards looked at deception operations as well as the actual invasion in Normandy on 6th June 1944. He also spoke about the German command decisions. To give some idea of scale, the statistics given by Lord Richards bear repeating.

- The majority of the troops who landed on D-Day itself were from the UK, America and Canada
- Over 155,000 troops landed on Day 1
- 1 million troops landed in the first month
- 6,939 amphibious vessels took part
- 13,000 aircraft crews flew missions

Lord Richards summed up the operation with this comment, "A stunning victory". Many questions came from the appreciative audience before the raffle was drawn.

The views expressed by contributors to this Newsletter do not necessarily reflect those of the General Committee. All rights are reserved. Please contact the editor for permission to use any material.

Hon. Secretary: Dorothy Bone
01243 373780
dorothybone@btinternet.com

Membership: Shelagh Standen
shelaghstanden@hotmail.co.uk

Website: www.emsworthmuseum.org.uk Newsletter Editor: Christine Bury
01243 377870 christine.bury@ntlworld.com

If you would like to provide a news article or illustration, please send it to the editor, preferably on disk or by email.

Printed by SRP Design & Print, Leigh Road, Chichester, PO19 8TU Tel: 01243 782988

© Emsworth Maritime and Historical Trust